



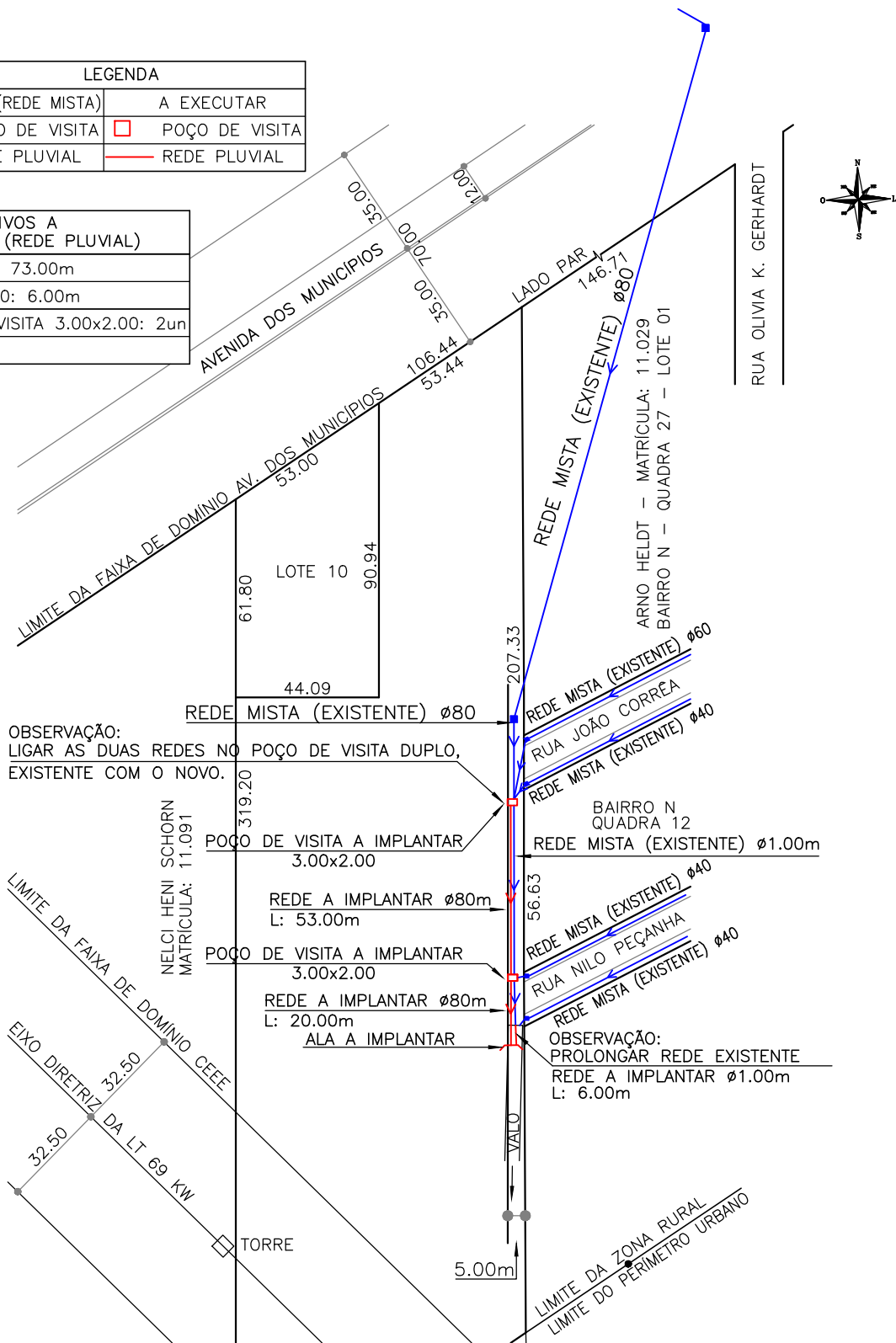


PROJETO: IMPLANTAÇÃO DE GALERIA DE REDE DE ESGOTO MISTO  
(ESGOTO PLUVIAL E CLOACAL EM UMA ÚNICA REDE).  
TRECHO ENTRE RUA JOÃO CORRÊA E RUA NILO PEÇANHA.

LEGENDA	
EXISTENTE (REDE MISTA)	A EXECUTAR
 POÇO DE VISITA	 POÇO DE VISITA
 REDE PLUVIAL	 REDE PLUVIAL

QUANTITATIVOS A EXECUTAR (REDE PLUVIAL)
CANO ø80: 73.00m
CANO ø1.00: 6.00m
POÇO DE VISITA 3.00x2.00: 2un
ALA: 1un



MUNICÍPIO DE CAMPO BOM

ESCALA	DATA	TOPOGRAFIA	VISTO
1/1.750	julho 2024	Daril	